

## CERTIFICATE OF ANALYSIS

PRODUCT IDENTIFICATION	COMPANY IDENTIFICATION
<b>PRODUCT NAME :</b> Rosewood Organic - ESSENTIAL OIL <b>BOTANICAL NAME :</b> Aniba rosaedora <b>SYNONYM(S) :</b>	<b>COMPANY :</b> ZAYAT AROMA INC. <b>ADDRESS :</b> 1339 SHEFFORD, BROMONT (QC) J2L 1C9, CANADA <b>TELEPHONE :</b> 1.855.534.1671 <b>FAX :</b> 1.855.318.6124 <b>WEB :</b> WWW.ZAYATAROMA.COM <b>E-MAIL :</b> INFO@ZAYATAROMA.COM
<b>INCI NAME :</b> Bois de rose natural oil <b>CAS TSCA :</b> 8015-77-8 <b>CAS EINECS :</b> 281-093-7 <b>FEMA :</b> 2156 <b>COUNTRY OF ORIGIN :</b> Brésil	<b>HS CODE :</b> 3301.29 <b>EINECS :</b> N/A <b>COE :</b> N/A <b>FDA CODE :</b> N/A
<b>PRODUCTION METHOD :</b> Steam distilled <b>PART DISTILLED :</b> Wood <b>LOT NUMBER :</b> EA264768 BR32616A <b>PRODUCTION DATE :</b> 01/04/2016 <b>EXPIRATION DATE :</b> 01/04/2018	

Certified organic by Ecocert Canada



PROPERTIES	SPECIFICATIONS	RESULTS
APPEARANCE	<i>Colorless to pale yellow liquid</i>	<i>Complies</i>
ODOR	<i>Characteristic sweet woody rose-like odor</i>	<i>Complies</i>
SOLUBILITY	<i>Soluble in alcohol and oils. Insoluble in water.</i>	<i>Complies</i>
SPECIFIC GRAVITY	<i>0.850 – 0.880 @ 20°C</i>	<i>Complies</i>
OPTICAL ROTATION	<i>-4.0 – +6.0 @ 20°C</i>	<i>Complies</i>
REFRACTIVE INDEX	<i>1.462 – 1.470 @ 20°C</i>	<i>Complies</i>

### DISCLAIMER

The information above is given in good faith and is believed to be accurate and represents the best information currently available to us. However, we make no warranty of merchantability or any other warranty, express or implied, with respect to such information, and we assume no liability resulting from its use. Users should make their own investigations to determine the suitability of the information for their particular purposes. In no event shall ZAYAT AROMA INC. be liable for any claims, losses, or damages of any third party or for lost profits or any special, indirect, incidental, consequential or exemplary damages, howsoever arising, even if ZAYAT AROMA INC. has been advised of the possibility of such damages. This data is not to be constructed as absolutely complete since additional data may be desirable when particular conditions or circumstances exist. This data relates only to the specific material designated and not to be used in combination with any other material. Many regulations pertain directly or indirectly to the product's end use and disposal of containers and unused material. It is the purchaser's responsibility to familiarize themselves with all applicable regulations.

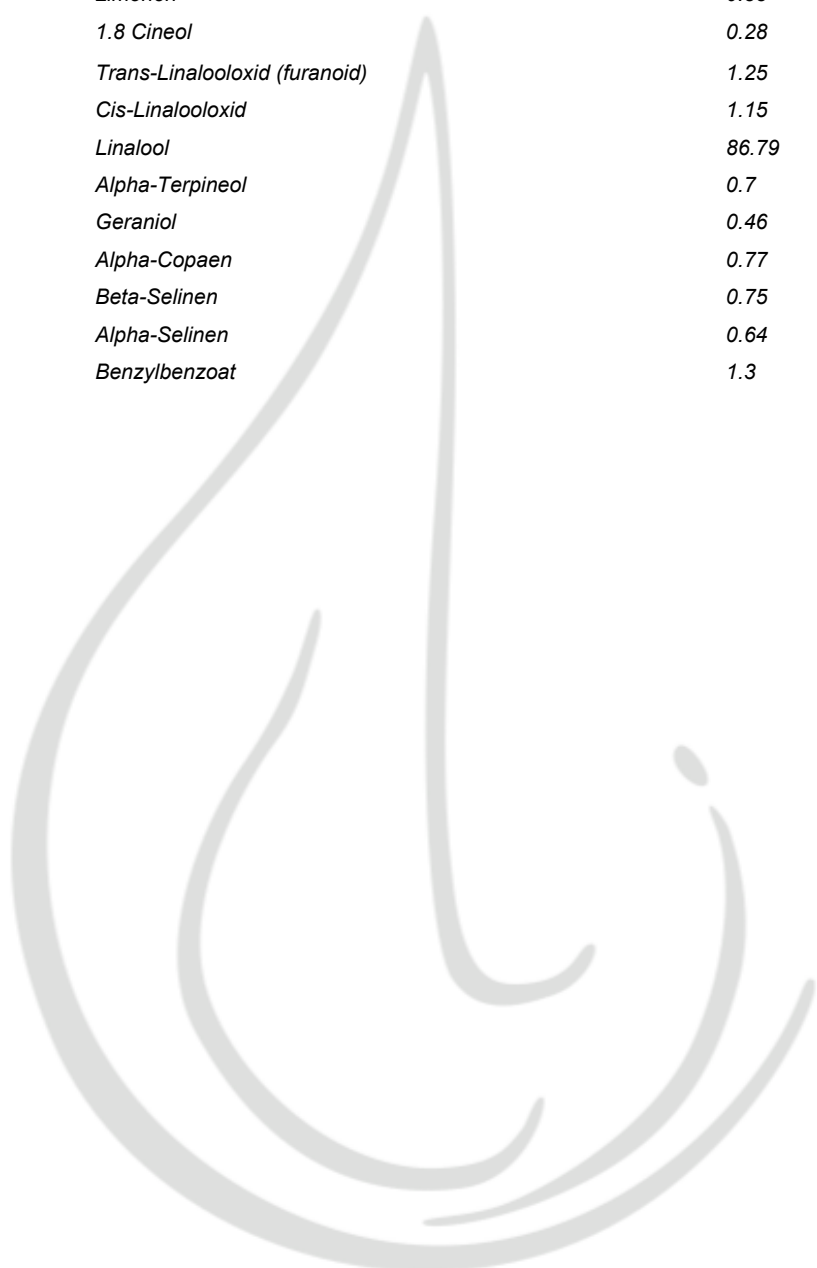
## CERTIFICATE OF ANALYSIS

Rosewood Organic - ESSENTIAL OIL  
Aniba rosaeodora

LOT : EA264768 BR32616A

CERTIFICATE OF ANALYSIS

COMPONENTS	% TOTAL : 94.42
<i>Limonen</i>	0.33
<i>1.8 Cineol</i>	0.28
<i>Trans-Linalooloxid (furanoid)</i>	1.25
<i>Cis-Linalooloxid</i>	1.15
<i>Linalool</i>	86.79
<i>Alpha-Terpineol</i>	0.7
<i>Geraniol</i>	0.46
<i>Alpha-Copaen</i>	0.77
<i>Beta-Selinen</i>	0.75
<i>Alpha-Selinen</i>	0.64
<i>Benzylbenzoat</i>	1.3



CERTIFICATE OF ANALYSIS